



LET BUCKEYE HELP MAKE YOUR PRODUCT AS BEAUTIFUL AS IT CAN BE.

# Put Our Customer Service Team To Work For You!

## EMBOSSING



In addition to your choice of paper or plain lid styles on our flat and deep containers, Buckeye also offers you custom embossing for a truly exception finish. An embossed lid offers a unique way to

enhance a brand image, logo, or slogan. Embossing not only adds a distinctive look to the lid, but also reduces your cost over time, by eliminating the need for applying labels. Just ask your Buckeye Customer Service Representative when you place your order.

## SPECIAL SIZES

Let Buckeye create a container to meet your specific needs. Whether it be a unique size, material, color, or product feature, give us a call to explore ideas that will make your product stand out.

## VALUE-ADDED SERVICES



Our philosophy at Buckeye is to offer our customers the broadest range of services that will help them complete their products for sale. We'll work with you to make your business easier, with services like:

- For our retail oriented customers Buckeye suggests layer-packing which serves as convenient repack cartons to your customers and provides optimal protection during transit.
- Assembly
- Custom packaging for optimal handling
- Pad printing

## HOW CAN WE HELP YOU?

Here is just a handful of the kinds of products our customers package in a Buckeye seamless tin container:

- Candles
- Soaps
- Cosmetics
- Teas
- Fragrance
- Inks
- Tobacco
- Photography
- Laboratory
- Music/recording



**B U C K E Y E**  
novelty cans

A Division of Buckeye Shapeform

Whatever your needs, we'll help your products look their very best! Please give us a call or visit us online.

Toll-free: 1-800-728-0776 • Fax: 614-445-8224 • Email: [sales@buckeyeshapeform.com](mailto:sales@buckeyeshapeform.com)  
[www.buckeye-cans.com](http://www.buckeye-cans.com) • 555 Marion Road, Columbus, OH 43207

BUCKEYE PREMIUM

# Seamless Tin Containers

the perfect finish for your product



BUCKEYE  
novelty cans

A Division of Buckeye Shapeform

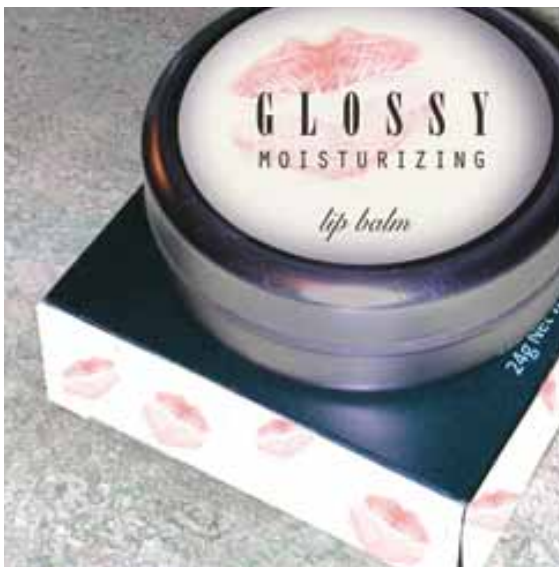
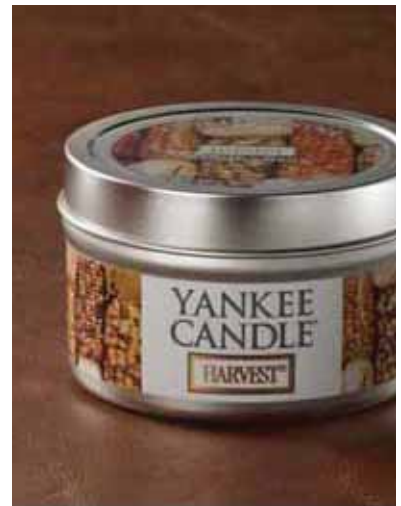
MAKING YOUR PRODUCTS LOOK THEIR BEST WITH BEAUTIFUL SEAMLESS TIN CONTAINERS.

# What A Way To Finish!

You've spent the time to make your product as attractive and valuable to your customers as possible. You're ready to go to market. Now is the time for packaging your product in America's very best seamless tin containers... from Buckeye!

Buckeye Novelty Cans make your products look their very best with a complete line of premium, seamless tin-plated steel containers. Featuring silver, gold and special colors sizes from 1/16 to 32 oz. (including hard-to-find 3-oz sizes), plain or paper labels, and straight or safety edges, Buckeye can help you finish your product with class. Plus, with Buckeye, you get the industry's best set of value-added services, including custom sizes, embossed stamping, label application, optional finishes, and more.

With Buckeye ShapeForm seamless slipcover containers, the quality of your product will be reflected in the quality of its packaging. So, please browse through our catalog to see our expanded line-up of flat, deep, CD/film, and oblong containers that will help you look your best when it counts... at the finish!



Customer Service:  
**1-800-728-0776**  
[www.buckeye-cans.com](http://www.buckeye-cans.com)

## Prepare Your Order

Buckeye has a full range of container options for every function, from deep and flat bodies or containers, lids with rolled safety edge, to CD containers. Prepare your order for Buckeye can bodies, lids, or complete containers using the tables provided. Just follow these easy steps:

- STEP 1** Select your can body or container type (flat, deep, oblong, etc.)
- STEP 2** Next, select your can body or container lid style (straight or safety edge, with or without paper label, etc.)
- STEP 3** Once you've found your type and style, just pick a volume or size, and write down the part number in the chart below.
- STEP 4** When ordering a can body separately, you'll notice a separate column for corresponding "Lid Styles". The Lid Styles Table is on page 6.
- STEP 5** Once you've written down which part numbers you want, call the toll-free number on this page and your Buckeye Customer Service Representative will help you complete your order, including any special options or shipping specifications you request.

### EXAMPLE ONLY

1 5 T B 1 0 0 - 0 0 2 5

CAN BODY OR CONTAINER PART NUMBER

1 5 T L 1 3 B

LID PART NUMBER

Please complete for your ordering convenience.

--	--	--	--	--	--	--	--	--	--	--	--	--	--	--	--	--	--	--	--

CAN BODY OR CONTAINER PART NUMBER

--	--	--	--	--	--	--	--	--	--	--	--	--	--	--	--	--	--	--	--

LID PART NUMBER

## Completing Your Order

Once you have selected your can body and lid, or container part numbers, please call us toll-free to complete your order. A Buckeye Customer Service Representative will be happy to answer all your questions:

**1-800-728-0776**

For more information visit [www.buckeye-cans.com](http://www.buckeye-cans.com)

## Flat Seamless Tins



Straight Edge



Rolled Safety Edge

## Deep Seamless Tins



Straight Edge



Rolled Safety Edge

## Lid Styles



Plain, Straight Edge



Plain, Rolled Safety Edge



Paper Label, Straight Edge



Paper Label, Rolled Safety Edge

## Additional Products



Film Container, 35 mm & 16 mm



Separator Plug



Serrated Plug



Flanged Plug

### Style 200 – Deep Containers

Body & lid assembled – Body is beaded & straight edge – Lid w/paper label & straight edge



PART NUMBER	APROX VOLUME	BODY DIAMETER	BODY HEIGHT	LABEL HEIGHT	LABEL LENGTH	USES LID #:
1STC200-0050	1/2 oz.	1.31	0.69	0.38	4.12	1STL13A
1STC200-0100	1 oz.	1.53	1.03	0.66	4.81	1STL15A
1STC200-0175	1 3/4 oz.	1.91	1.19	0.79	5.98	1STL19A
1STC200-0200	2 oz.	1.94	1.19	0.79	6.09	1STL19A
1STC200-0400	4 oz.	2.41	1.50	1.07	7.55	1STL24A
1STC200-0600	6 oz.	2.96	1.94	1.51	9.29	1STL27A
1STC200-0800	8 oz.	3.00	2.06	1.63	9.42	1STL30A
1STC200-1600	16 oz.	3.88	2.53	2.01	12.17	1STL38A

\*For lid label dimension information, please reference to lids style table.

### Style 521 – Deep Containers

Body & lid assembled – Body w/rolled safety edge – Lid plain w/straight edge



PART NUMBER	APROX VOLUME	BODY DIAMETER	BODY HEIGHT	LABEL HEIGHT	LABEL LENGTH	USES LID #:
1STC521-0100	1 oz.	1.50	1.03	0.66	4.71	1STL15B
1STC521-0200	2 oz.	1.88	1.16	0.79	5.89	1STL19B
1STC521-0300	3 oz.	2.16	1.53	1.10	6.77	1STL22B
1STC521-0400	4 oz.	2.38	1.50	1.10	7.46	1STL24B
1STC521-0600	6 oz.	2.69	1.94	1.51	8.44	1STL27B
1STC521-0800	8 oz.	2.97	2.13	1.66	9.32	1STL30B
1STC521-1200	12 oz.	3.44	2.25	1.79	10.80	1STL34B
1STC521-1600	16 oz.	3.81	2.53	1.95	11.97	1STL38B
1STC521-3200	32 oz.	4.97	2.97	2.38	15.60	1STL50B

\*For lid label dimension information, please reference to lids style table.

### Style 531 – Deep Containers

Body & lid assembled – Body w/rolled safety edge – Lid w/paper label & straight edge



PART NUMBER	APROX VOLUME	BODY DIAMETER	BODY HEIGHT	LABEL HEIGHT	LABEL LENGTH	USES LID #:
1STC531-0100	1 oz.	1.50	1.03	0.66	4.71	1STL15A
1STC531-0200	2 oz.	1.88	1.16	0.79	5.89	1STL19A
1STC531-0400	4 oz.	2.38	1.50	1.10	7.46	1STL24A
1STC531-0600	6 oz.	2.69	1.94	1.51	8.44	1STL27A
1STC531-0800	8 oz.	2.97	2.13	1.66	9.32	1STL30A
1STC531-1600	16 oz.	3.81	2.53	1.95	11.97	1STL38A

\*For lid label dimension information, please reference to lids style table.

### Style 201 – Deep Containers

Body & lid assembled – Body is beaded & straight edge – Lid plain & straight edge



PART NUMBER	APROX VOLUME	BODY DIAMETER	BODY HEIGHT	LABEL HEIGHT	LABEL LENGTH	USES LID #:
1STC201-0100	1 oz.	1.53	1.03	0.66	4.81	1STL15B
1STC201-0175	1 3/4 oz.	1.91	1.19	0.79	5.98	1STL19B
1STC201-0200	2 oz.	1.94	1.19	0.79	6.09	1STL19B
1STC201-0300	3 oz.	2.19	1.50	1.10	6.87	1STL22B
1STC201-0400	4 oz.	2.41	1.50	1.07	7.55	1STL24B
1STC201-0600	6 oz.	2.96	1.94	1.51	9.29	1STL27B
1STC201-0800	8 oz.	3.00	2.06	1.63	9.42	1STL30B
1STC201-1200	12 oz.	3.47	2.38	1.82	10.89	1STL34B
1STC201-1600	16 oz.	3.88	2.53	2.01	12.17	1STL38B
1STC201-3200	32 oz.	5.03	3.00	2.45	15.80	1STL50B

\*For lid label dimension information, please reference to lids style table.

### Style 551 – Deep Containers

Body & lid assembly – Body w/rolled safety edge – Lid plain w/



PART NUMBER	APROX VOLUME	BODY DIAMETER
1STC551-0400	4 oz.	2.38
1STC551-0800	8 oz.	2.97
1STC551-1200	12 oz.	3.44
1STC551-1600	16 oz.	3.81

\*For lid label dimension information, please reference to lids style table.

### Style 100 – Flat Containers

Body & lid assembled – Body is beaded & straight edge – Lid plain



PART NUMBER	APROX VOLUME	BODY DIAMETER
1STC100-0025	1/4 oz.	1.31
1STC100-0050	1/2 oz.	1.50
1STC100-0100	1 oz.	1.94
1STC100-0200	2 oz.	2.41
1STC100-0300	3 oz.	2.72
1STC100-0400	4 oz.	3.00
1STC100-0600	6 oz.	3.44
1STC100-0800	8 oz.	3.81

\*For lid label dimension information, please reference to lids style table.

### Style 101 – Flat Containers

Body & lid assembled – Body is beaded & straight edge – Lid plain



PART NUMBER	APROX VOLUME	BODY DIAMETER
1STC101-0025	1/4 oz.	1.31
1STC101-0050	1/2 oz.	1.50
1STC101-0075	3/4 oz.	1.75
1STC101-0100	1 oz.	1.94
1STC101-0200	2 oz.	2.41
1STC101-0300	3 oz.	2.72
1STC101-0400	4 oz.	3.00
1STC101-0600	6 oz.	3.44
1STC101-0800	8 oz.	3.81

\*For lid label dimension information, please reference to lids style table.

### Style 451 – Flat Containers

Body & lid assembled – Body w/rolled safety edge – Lid plain w/



PART NUMBER	APROX VOLUME	BODY DIAMETER
1STC451-0200	2 oz.	2.38
1STC451-0400	4 oz.	3.00
1STC451-0600	6 oz.	3.44
1STC451-0800	8 oz.	3.81

\*For lid label dimension information, please reference to lids style table.

### Style 421 – Flat Containers

Body & lid assembled – Body w/rolled safety edge – Lid plain w/



PART NUMBER	APROX VOLUME	BODY DIAMETER
1STC421-0100	1 oz.	1.91
1STC421-0200	2 oz.	2.38
1STC421-0300	3 oz.	2.69
1STC421-0400	4 oz.	3.00
1STC421-0600	6 oz.	3.44
1STC421-0800	8 oz.	3.81

\*For lid label dimension information, please reference to lids style table.

rolled safety edge

BODY HEIGHT	LABEL HEIGHT	LABEL LENGTH	USES LID #:
1.50	1.10	7.46	1STL24BR
2.13	1.66	9.32	1STL30BR
2.25	1.79	10.80	1STL34BR
2.53	1.95	11.97	1STL38BR

*please reference to lids style table.*

### Style 431 – Flat Containers

Body & lid assembled – Body w/rolled safety edge – Lid w/paper label & straight edge



PART NUMBER	APROX VOLUME	BODY DIAMETER	BODY HEIGHT	LABEL HEIGHT	LABEL LENGTH	USES LID #:
1STC431-0100	1 oz.	1.91	0.72	0.29	5.98	1STL19A
1STC431-0200	2 oz.	2.38	0.78	0.35	7.46	1STL24A
1STC431-0300	3 oz.	2.69	0.97	0.51	8.44	1STL27A
1STC431-0400	4 oz.	3.00	0.97	0.48	9.42	1STL30A
1STC431-0600	6 oz.	3.44	1.44	0.98	10.80	1STL34A
1STC431-0800	8 oz.	3.81	1.22	0.69	11.97	1STL38A

*\*For lid label dimension information, please reference to lids style table.*

### Style 200 De

Body w/straight edge



w/paper label & straight edge

BODY HEIGHT	LABEL HEIGHT	LABEL LENGTH	USES LID #:
0.38	0.08	4.12	1STL13A
0.53	0.20	4.71	1STL15A
0.59	0.23	6.09	1STL19A
0.78	0.32	7.55	1STL24A
1.03	0.60	8.54	1STL27A
1.00	0.54	9.42	1STL30A
1.44	0.98	10.80	1STL34A
1.28	0.76	11.97	1STL38A

*please reference to lids style table.*

### Style 521 – Deep Containers GOLD

Body & lid assembled – Bodies w/rolled safety edge – Lid plain w/straight edge



PART NUMBER	APROX VOLUME	BODY DIAMETER	BODY HEIGHT	LABEL HEIGHT	LABEL LENGTH	USES LID #:
1STC521-0100G	1 oz.	1.50	1.03	0.66	4.71	1STL15BGOLD
1STC521-0200G	2 oz.	1.88	1.16	0.79	5.89	1STL19BGOLD
1STC521-0300G	3 oz.	2.16	1.53	1.10	6.77	1STL22BGOLD
1STC521-0400G	4 oz.	2.38	1.50	1.10	7.46	1STL24BGOLD
1STC521-0600G	6 oz.	2.69	1.94	1.51	8.44	1STL27BGOLD
1STC521-0800G	8 oz.	2.97	2.13	1.66	9.32	1STL30BGOLD
1STC521-1200G	12 oz.	3.44	2.25	1.79	10.80	1STL34BGOLD
1STC521-1600G	16 oz.	3.81	2.53	1.95	11.97	1STL38BGOLD
1STC521-3200G	32 oz.	4.97	2.97	2.38	15.60	1STL50BGOLD

*\*For lid label dimension information, please reference to lids style table.*

### Style 511 De

Body w/rolled safety



plain & straight edge

BODY HEIGHT	LABEL HEIGHT	LABEL LENGTH	USES LID #:
0.38	0.08	4.12	1STL13B
0.53	0.20	4.71	1STL15B
0.59	0.23	5.50	1STL17B
0.59	0.23	6.09	1STL19B
0.78	0.32	7.55	1STL24B
1.03	0.60	8.54	1STL27B
1.00	0.54	9.42	1STL30B
1.44	0.98	10.80	1STL34B
1.28	0.76	11.97	1STL38B

*please reference to lids style table.*

### Style 421 – Flat Containers GOLD

Body & lid assembled – Body w/rolled safety edge – Lid plain w/straight edge



PART NUMBER	APROX VOLUME	BODY DIAMETER	BODY HEIGHT	LABEL HEIGHT	LABEL LENGTH	USES LID #:
1STC421-0100G	1 oz.	1.91	0.72	0.29	5.98	1STL19BGOLD
1STC421-0200G	2 oz.	2.38	0.78	0.35	7.46	1STL24BGOLD
1STC421-0300G	3 oz.	2.69	0.97	0.51	8.44	1STL27BGOLD
1STC421-0400G	4 oz.	3.00	0.97	0.48	9.42	1STL30BGOLD
1STC421-0600G	6 oz.	3.44	1.44	0.98	10.80	1STL34BGOLD
1STC421-0800G	8 oz.	3.81	1.22	0.69	11.97	1STL38BGOLD

*\*For lid label dimension information, please reference to lids style table.*

### Style 100 – FL

Body with straight e



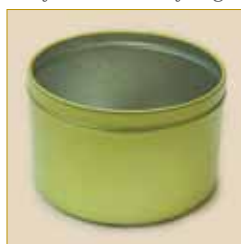
rolled safety edge

BODY HEIGHT	LABEL HEIGHT	LABEL LENGTH	USES LID #:
0.78	0.35	7.46	1STL24BR
0.97	0.48	9.42	1STL30BR
1.44	0.98	10.80	1STL34BR
1.22	0.69	11.97	1STL38BR

*please reference to lids style table.*

### Style 511 – Deep Bodies GOLD

Body w/rolled safety edge



PART NUMBER	APROX VOLUME	BODY DIAMETER	BODY HEIGHT	LABEL HEIGHT	LABEL LENGTH	USES LID #:
1STB511-0100G	1 oz.	1.50	1.03	0.66	4.71	1STL15BGOLD
1STB511-0200G	2 oz.	1.88	1.16	0.79	5.89	1STL19BGOLD
1STB511-0300G	3 oz.	2.16	1.53	1.10	6.77	1STL22BGOLD
1STB511-0400G	4 oz.	2.38	1.50	1.10	7.46	1STL24BGOLD
1STB511-0600G	6 oz.	2.69	1.94	1.51	8.44	1STL27BGOLD
1STB511-0800G	8 oz.	2.97	2.13	1.66	9.32	1STL30BGOLD
1STB511-1200G	12 oz.	3.44	2.25	1.79	10.80	1STL34BGOLD
1STB511-1600G	16 oz.	3.81	2.53	1.95	11.97	1STL38BGOLD
1STB511-3200G	32 oz.	4.97	2.97	2.38	15.60	1STL50BGOLD

*\*For lid label dimension information, please reference to lids style table.*

### Style 411 – FL

Body w/rolled safety



w/straight edge

BODY HEIGHT	LABEL HEIGHT	LABEL LENGTH	USES LID #:
0.72	0.29	5.98	1STL19B
0.78	0.35	7.46	1STL24B
0.97	0.51	8.44	1STL27B
0.97	0.48	9.42	1STL30B
1.44	0.98	10.80	1STL34B
1.22	0.69	11.97	1STL38B

*please reference to lids style table.*

### Style 411 – Flat Bodies GOLD

Body w/rolled safety edge



PART NUMBER	APROX VOLUME	BODY DIAMETER	BODY HEIGHT	LABEL HEIGHT	LABEL LENGTH	USES LID #:
1STB411-0100G	1 oz.	1.91	0.72	0.29	5.98	1STL19BGOLD
1STB411-0200G	2 oz.	2.38	0.78	0.35	7.46	1STL24BGOLD
1STB411-0300G	3 oz.	2.69	0.97	0.51	8.44	1STL27BGOLD
1STB411-0400G	4 oz.	3.00	0.97	0.48	9.42	1STL30BGOLD
1STB411-0600G	6 oz.	3.44	1.44	0.98	10.80	1STL34BGOLD
1STB411-0800G	8 oz.	3.81	1.22	0.69	11.97	1STL38BGOLD

*\*For lid label dimension information, please reference to lids style table.*

### Oblong

Straight Edge



## Deep Bodies

edge

PART NUMBER	APROX VOLUME	BODY DIAMETER	BODY HEIGHT	LABEL HEIGHT	LABEL LENGTH	USES LID #:
1STB200-0050	1/2 oz.	1.31	0.69	0.38	4.12	1STL13A, 1STL13B
1STB200-0100	1 oz.	1.53	1.03	0.66	4.81	1STL15A, 1STL15B
1STB200-0175	1 3/4 oz.	1.91	1.19	0.79	5.98	1STL19A
1STB200-0200	2 oz.	1.94	1.19	0.79	6.09	1STL19A, 1STL19B
1STB200-0300	3 oz.	2.19	1.50	1.10	6.87	1STL22B
1STB200-0400	4 oz.	2.41	1.50	1.07	7.55	1STL24A, 1STL24B, 1STL24BR
1STB200-0600	6 oz.	2.96	1.94	1.51	9.29	1STL27A, 1STL27B
1STB200-0800	8 oz.	3.00	2.06	1.63	9.42	1STL30A, 1STL30B, 1STL30BR
1STB200-1200	12 oz.	3.47	2.38	1.82	10.89	1STL34A, 1STL34B, 1STL34BR
1STB200-1600	16 oz.	3.88	2.53	2.01	12.17	1STL38A, 1STL38B, 1STL38BR
1STB200-3200	32 oz.	5.03	3.00	2.45	15.80	1STL50B

\*For lid label dimension information, please reference to lids style table.

## Deep Bodies

edge

PART NUMBER	APROX VOLUME	BODY DIAMETER	BODY HEIGHT	LABEL HEIGHT	LABEL LENGTH	USES LID #:
1STB511-0100	1 oz.	1.50	1.03	0.66	4.71	1STL15A, 1STL15B
1STB511-0200	2 oz.	1.88	1.16	0.79	5.89	1STL19A, 1STL19B
1STB511-0300	3 oz.	2.16	1.53	1.10	6.77	1STL22B
1STB511-0400	4 oz.	2.38	1.50	1.10	7.46	1STL24A, 1STL24B, 1STL24BR
1STB511-0600	6 oz.	2.69	1.94	1.51	8.44	1STL27A, 1STL27B
1STB511-0800	8 oz.	2.97	2.13	1.66	9.32	1STL30A, 1STL30B, 1STL30BR
1STB511-1200	12 oz.	3.44	2.25	1.79	10.80	1STL34A, 1STL34B, 1STL34BR
1STB511-1600	16 oz.	3.81	2.53	1.95	11.97	1STL38A, 1STL38B, 1STL38BR
1STB511-3200	32 oz.	4.97	2.97	2.38	15.60	1STL50B

\*For lid label dimension information, please reference to lids style table.

## Flat Bodies

edge

PART NUMBER	APROX VOLUME	BODY DIAMETER	BODY HEIGHT	LABEL HEIGHT	LABEL LENGTH	USES LID #:
1STB100-0025	1/4 oz.	1.31	0.38	0.08	4.12	1STL13A, 1STL13B
1STB100-0050	1/2 oz.	1.50	0.53	0.20	4.71	1STL15A, 1STL15B
1STB100-0100	1 oz.	1.94	0.59	0.23	6.09	1STL19A, 1STL19B
1STB100-0200	2 oz.	2.41	0.78	0.32	7.55	1STL24A, 1STL24B, 1STL24BR
1STB100-0300	3 oz.	2.72	1.03	0.60	8.54	1STL27A, 1STL27B
1STB100-0400	4 oz.	3.00	1.00	0.54	9.42	1STL30A, 1STL30B, 1STL30BR
1STB100-0600	6 oz.	3.44	1.44	0.98	10.80	1STL34A, 1STL34B, 1STL34BR
1STB100-0800	8 oz.	3.81	1.28	0.76	11.97	1STL38A, 1STL38B, 1STL38BR

\*For lid label dimension information, please reference to lids style table.

## Flat Bodies

edge

PART NUMBER	APROX VOLUME	BODY DIAMETER	BODY HEIGHT	LABEL HEIGHT	LABEL LENGTH	USES LID #:
1STB411-0100	1 oz.	1.91	0.72	0.29	5.98	1STL19A, 1STL19B
1STB411-0200	2 oz.	2.38	0.78	0.35	7.46	1STL24A, 1STL24B, 1STL24BR
1STB411-0300	3 oz.	2.69	0.97	0.51	8.44	1STL27A, 1STL27B
1STB411-0400	4 oz.	3.00	0.97	0.48	9.42	1STL30A, 1STL30B, 1STL30BR
1STB411-0600	6 oz.	3.44	1.44	0.98	10.80	1STL34A, 1STL34B, 1STL34BR
1STB411-0800	8 oz.	3.81	1.22	0.69	11.97	1STL38A, 1STL38B, 1STL38BR

\*For lid label dimension information, please reference to lids style table.

PART NUMBER	CAP	LENGTH	WIDTH	HEIGHT	LABEL LENGTH	LABEL WIDTH	LABEL CORNER RADIUS
1STLOBL0050	1/2 oz.	2.00	1.28	0.18	1.70	0.97	0.22
1STLOBL0100	1 oz.	2.74	1.58	0.28	2.52	1.36	0.39

\*For lid label dimension information, please reference to lids style table.

## Flanged and Separator Plugs

STYLE STPF FLANGED PLUG PART NUMBER	STYLE STPP SEPERATOR PLUG PART NUMBER	PLUG SIZE
1STPF-150	1STPP-150	1 1/2"
1STPF-175	1STPP-175	1 3/4"
1STPF-200	1STPP-200	2"
1STPF-225	1STPP-225	2 1/4"
1STPF-250	1STPP-250	2 1/2"
1STPF-275	1STPP-275	2 3/4"
1STPF-300	1STPP-300	3"
1STPF-325	1STPP-325	3 1/4"
1STPF-350	1STPP-350	3 1/2"
1STPF-375	1STPP-375	3 3/4"
1STPF-400	1STPP-400	4"
1STPF-450	1STPP-450	4 1/2"
1STPF-500	1STPP-500	5"
1STPF-550	1STPP-550	5 1/2"

STYLE STPS SERRATED PLUGS PART NUMBER	PLUG SIZE
1STPS-100	1"
1STPS-150	1 1/2"
1STPS-175	1 3/4"
1STPS-200	2"
1STPS-225	2 1/4"
1STPS-250	2 1/2"
1STPS-275	2 3/4"
1STPS-300	3"
1STPS-350	3 1/2"
1STPS-400	4"
1STPS-450	4 1/2"
1STPS-500	5"

## Style STFC – Film Containers

PART NUMBER	SIZE	
1STFC0835	100' Reel	Make to Order
1STFC1635 (CD size)	200' Reel	Straight Edge
1STFC1635-RB (CD size)	200' Reel	Rolled Edge

16 mm

PART NUMBER	SIZE	
#8-16	100' Reel	Make to Order

## Style STCOBL – Containers

Oblong

PART NUMBER	SIZE
1STCOBL-0050	1/2 oz.
1STCOBL-0100	1 oz.

## Style STPT

Penetration Thimbles

PART NUMBER	SIZE
1STPT-1188	7/8" x 1 3/16"

## Lid Styles

PART NUMBER	TYPE	DIA	HT	LABEL DIA	FOR MODELS
1STL13A	Paper label, straight edge	1.34	0.22	1.11	1/4 oz. Flat, 1/2 oz. Deep
1STL13B	Plain w/straight edge	1.34	0.18	1.17	1/4 oz. Flat, 1/2 oz. Deep
1STL15A	Paper label, straight edge	1.53	0.27	1.24	1/2 oz. Flat, 1 oz. Deep
1STL15B	Plain w/straight edge	1.53	0.27	1.30	1/2 oz. Flat, 1 oz. Deep
1STL15BGOLD	Plain w/straight edge	1.53	0.27	1.30	1 oz. Deep
1STL19A	Paper label, straight edge	1.94	0.28	1.66	1 oz. Flat, 1 3/4 oz. Deep
1STL19B	Plain w/straight edge	1.94	0.30	1.68	1 oz. Flat, 1 3/4 oz. Deep
1STL19BGOLD	Plain w/straight edge	1.94	0.30	1.68	1 oz. Flat, 2 oz. Deep
1STL22B	Plain w/straight edge	2.19	0.30	1.87	3 oz. Deep
1STL22BGOLD	Plain w/straight edge	2.19	0.30	1.87	3 oz. Deep
1STL24A	Paper label, straight edge	2.44	0.31	2.14	4 oz. Deep
1STL24B	Plain w/straight edge	2.41	0.33	2.08	4 oz. Deep
1STL24BR	Plain w/safety edge	2.43	0.33	2.26	4 oz. Deep
1STL24BGOLD	Plain w/straight edge	2.41	0.33	2.08	2 oz. Flat, 4 oz. Deep
1STL27A	Paper label, straight edge	2.73	0.30	2.39	3 oz. Flat, 6 oz. Deep
1STL27B	Plain w/straight edge	2.72	0.33	2.40	3 oz. Flat, 6 oz. Deep
1STL27BGOLD	Plain w/straight edge	2.72	0.33	2.40	3 oz. Flat, 6 oz. Deep
1STL30A	Paper label, straight edge	3.00	0.34	2.66	4 oz. Flat, 8 oz. Deep
1STL30B	Plain w/straight edge	3.00	0.37	2.63	4 oz. Flat, 8 oz. Deep
1STL30BR	Plain w/safety edge	3.00	0.37	2.63	4 oz. Flat, 8 oz. Deep
1STL30BGOLD	Plain w/straight edge	3.00	0.37	2.63	4 oz. Flat, 8 oz. Deep
1STL34A	Paper label, straight edge	3.44	0.46	3.08	6 oz. Flat, 12 oz. Deep
1STL34B	Plain w/straight edge	3.44	0.46	3.08	6 oz. Flat, 12 oz. Deep
1STL34BR	Plain w/safety edge	3.44	0.30	3.27	6 oz. Flat, 12 oz. Deep
1STL34BGOLD	Plain w/straight edge	3.44	0.46	3.08	6 oz. Flat, 12 oz. Deep
1STL38A	Paper label, straight edge	3.84	0.44	3.36	8 oz. Flat, 16 oz. Deep
1STL38B	Plain w/straight edge	3.86	0.49	3.46	8 oz. Flat, 16 oz. Deep
1STL38BR	Plain w/safety edge	3.84	0.41	3.62	8 oz. Flat, 16 oz. Deep
1STL38BGOLD	Plain w/straight edge	3.86	0.49	3.46	8 oz. Flat, 16 oz. Deep
1STL50B	Plain w/straight edge	5.00	0.49	4.55	32 oz. Deep
1STL50BGOLD	Plain w/straight edge	5.00	0.49	4.55	32 oz. Deep