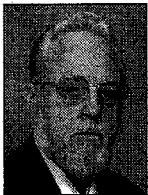


ARTS

Sarah Rogers was named vice president of advancement at **CAPA**.

ASSOCIATIONS

The **Ohio Council of Retail Merchants** has promoted **Gordon M. Gough** to executive vice president and chief information officer.



D. Presley

Dave Presley, corporate safety manager at **Sequet**, was named president of the **Capital Area Safety Council**.



J. Mottley

J. Donald Mottley, an attorney in the Columbus office of **Taft Stettinius & Hollister LLP**, was named chair of the **Ohio State Bar Association Taxation Committee**.

RANKING &

BOARDS

Six members have joined the board of directors of **MAP Furniture Bank**: **Claudius Christmas**, IT director for corporate solutions, **Cardinal Health**; **Tom Houle**, vice president, exclusive agency, **Nationwide Financial Network**; **Colleen Perry Keith**, director of development, **Kappa Kappa Gamma Foundation**; **Louise Seipel**, director of supportive services, **Community Properties of Ohio**; **Steve Snethkamp**, senior manager, **Ernst & Young's risk advisory services**; and **Jennie Wilson**, senior vice president, finance, **Limited Brands Inc.**

The **Greater Columbus Arts Council** elected three new board of trustee members to one-year terms, including: **Milton D. Baughman**, senior vice president at **Huntington National Bank**; **Willie B. Mayberry Jr.**, senior vice president at **JPMorgan Chase**; and **Janelle Simmons**, manager of corporate giving programs at **Limited Brands Inc.**



S. Buchenroth

Stephen R. Buchenroth, a partner at **Vorys Sater Seymour and Pease LLP**, was named chairman of the board of directors of **Wittenberg University**.

SPOTLIGHT

KARRI BENISHEK

Age: 33

Title and occupation: Senior director of marketing, **Max & Erma's**



loves to be a marketer because it's fun and glamorous and everyday life ultimately revolves around food. The real answer is that this business found me. I've just been fortunate to have a series of very talented people read me well and believe in me along the way.

Most admire in business: No one specifically, but anyone profoundly success-

ful that retains and projects humility.

Best career move: Volunteering with the **American Red Cross**. It allowed me to develop presentation skills, problem solving and working with diverse groups of people in a safe environment outside of my job itself.

Biggest career blunder: I checked the thesaurus and blunder is definitely the

same as mistake. They teach you in school that that word doesn't really exist if you learn from experience.

Best compliment anyone could give you: "You made a positive difference."

Favorite book: *Into Thin Air* by **Jon Krakauer**

Favorite TV show: *The Office*. How ridiculously real it is at times.

Favorite movie: *Gladiator*, *Last of the Mohicans*, *Dances*

With Wolves, Amistad...see a trend here?

If you won the lottery tomorrow: The toughest part would be figuring out how not to sound like the typical cliché and find the charitable organization that I would spend a good chunk of it responsibly and with the most impact. So, I'd probably have to take a sabbatical to personally make sure it touched the most number of children's lives.

Pet peeve: Those who live with the expectation that the rest of the environment needs to adapt to them.

CONSULTING

Tony Moseley was hired as a member of the internal team at **Quick Solutions Inc.**

Roger Bartz has rejoined the Columbus office of **RMT Inc.** as a senior consultant.

GOVERNMENT

Craig Predieri was named chief legal counsel at the **Ohio Department of Insurance**.

ENGINEERING



J. Collins

HEALTH CARE



Porter Wright Morris & Arthur

LAW



K. Hockstad

Karen S. Hockstad has joined **Shumaker Loop & Kendrick LLP** as a partner in the Columbus office.

New attorneys and their practice areas at **Lane Alton & Horst LLC** include **Alan Wayne Sheppard**, civil litigation and an arbitrator/mediator; and **Thomas J. Keener** and **Michael J. Kelley**, personal injury, litigation, construction litigation and products liability. New associates include: **Jennifer A. French**, personal injury and general litigation; **Ray S. Pantle**, general litigation; and **Chad K. Hemminger**, general litigation, criminal defense, and family and juvenile law.

MANAGED CARE

At **Progressive Medical Inc.**, **Thomas E. Ash** was named vice president of sales and **Kent W. Morgan** was promoted to vice president of national sales.

MANUFACTURE

Carl Estock was named regional sales manager at **Buckeye Shapeform**.

RETAIL

TECHNOLOGY



L. Wheelless

Leslyn Wheelless has joined **TechColumbus** as membership sales manager.